



MODELS: HTHB-8-NF HTHB-LR-NF

* Rated for Indoor Use Only



**In-Wall Recessed
Bottle Filling Station**



These water coolers are certified to NSF/ANSI 61.

PANEL SYSTEM

Designed with hinged top and bottom stainless steel panels for easy access and service. Refrigerated model includes louvered panel. Non-refrigerated models includes solid panel.

**REFRIGERATION SYSTEM
(Model HTHB-HAC-NF)**

Hermetically sealed, positive start compressor with lifetime lubrication and built-in overload protection, efficient capillary sizing, large capacity dryer-strainer, and self-lubricated fan cools copper/aluminum condenser. System uses R134A refrigerant. Protected by Halsey Taylor's Limited 5 Year Warranty.

SUGGESTED SPECIFICATIONS

Model HTHB-8-NF provides 8.0 gph of 50° F water at 90° F ambient and 80° F inlet water. Model HTHB-LR-NF is non-refrigerated and provides ambient water. Shall be recessed design and constructed of 18 gauge Type 300 series stainless steel and ABS plastic. Shall include electronic sensor for no-touch activation with automatic 20-second shut-off timer. Shall provide 1 - 1.5 gpm flow rate with laminar flow to minimize splashing. Shall include antimicrobial protected plastic components to prevent mold and mildew. Shall meet ADA guidelines for reach ranges, when properly installed. Shall be lead-free design which meets Safe Drinking Water Act and is certified to NSF/ANSI 61 and California AB1953. Shall be certified to UL399 and CAN/SA 22.2 No. 120.

GENERAL

In-wall, recessed design for stand-alone applications or paired with Halsey Taylor Contour™ and OVL-II™ fountains to create the ultimate high end water station. When properly installed, unit meets reach range guidelines as defined by the Americans with Disabilities Act.

BOTTLE FILLING

Quick fill rate is 1.5 gallons per minute for non-refrigerated models and 1 gallon per minute for refrigerated models. Laminar flow provides a clean fill with minimal splash and easy maintenance.

SENSOR ACTIVATED

User interface design makes touchless operation intuitive. Equipped with automatic 20-second shut-off timer.

SILVER ION ANTI-MICROBIAL PROTECTION

Key plastic components are integrated with silver ion anti-microbial protection to inhibit growth of mold and mildew.

GREEN COUNTER™

Visually displays count of 20 oz. plastic bottles saved from landfills.

MOUNTING FRAME

Mounting frame is manufactured of corrosion resistant, galvanized steel. open construction designed for ease of installation. Mounting frame can be shipped in advance for rough-in installation.

NOTE: Continued product improvement makes specifications subject to change without notice. See Halsey Taylor website for most current spec sheet.



HTHB-8-NF

HTHB-LR-NF

Stainless Steel Finish Only

- Consists of multiple cartons as follows:**
HYDROBOOST Station with Panels
Mounting Frame
Cooling unit - SJ8-Q (Model HTHB-8-NF only)

JOB NAME: _____

ENGINEER/CONTRACTOR NAME: _____

APPROVAL: _____
DATE: _____



THIRD-PARTY CERTIFIED TO:
* UL399 & CAN/CSA 22.2 NO. 120
* NSF/ANSI 61-ANNEX G, AB 1953

MODELS HTHB-8-NF & HTHB-LR-NF

Filterless HYDROBOOST™ In-Wall Recessed Bottle Filling Station

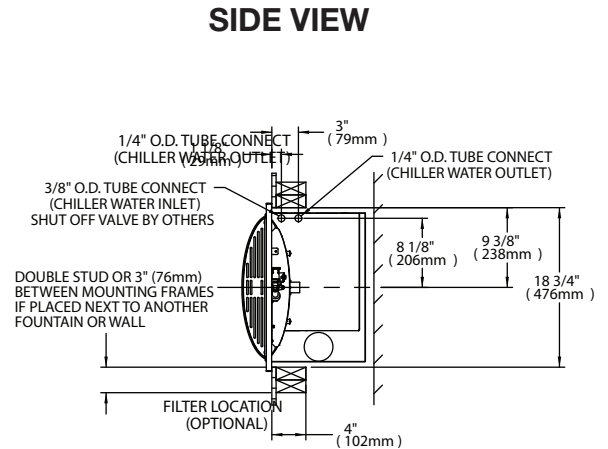
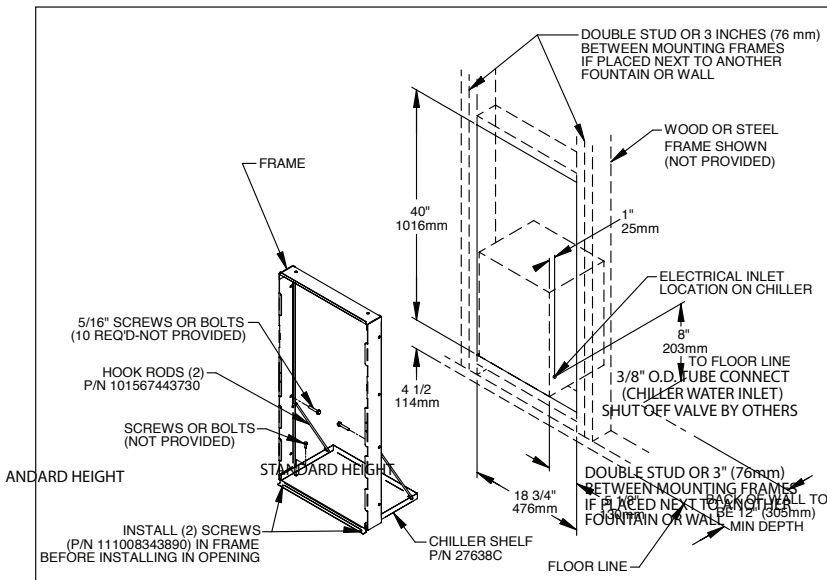
* Rated for Indoor Use Only

OPERATING PRESSURES:
Supply water - 105 psi maximum

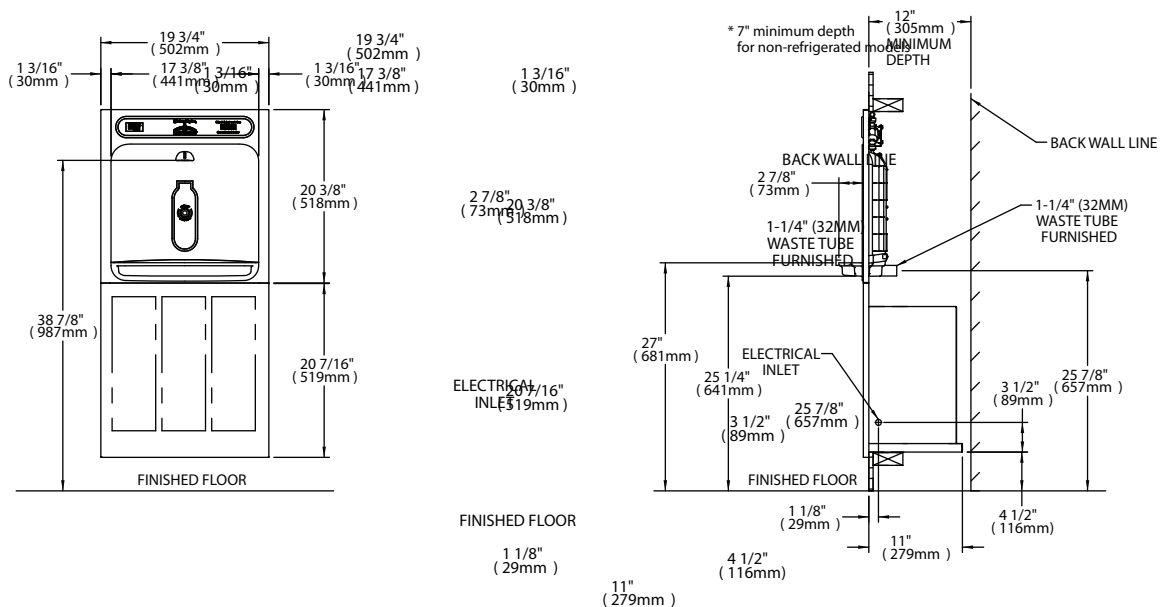
Minimum 40 psi supply line pressure required in special circumstances when both sides of bilevel are in use simultaneously to ensure adequate stream height. Does not apply to non-refrigerated units.

ELECTRICAL

Hydroboost station equipped with electric cord and three-prong molded rubber plug for use with 15-amp minimum receptacle. For the cooling unit, a junction box for a (3) wire, 10 amp branch circuit is provided. Rated at 115 volt, 60 Hz, single phase.



FRONT VIEW / WALL LAYOUT



Halsey Taylor®

Specifications and measurements are subject to change without notification. Please visit halseytaylor.com for most current version.